

FOLLOW-UP OF THE FATE OF OUR PRE-DIALYSIS PATIENTS BETWEEN 2009 AND 2016

Judit Toth¹, Iren Szakacs¹, Eva Nagy¹, Imre Kulcsar^{1,2}

¹ B. Braun Avitum Hungary ePlc. Dialysis Centre No. 6, Szombathely

² Markusovszky University Teaching Hospital, Szombathely

INTRODUCTION

The number of patients with advanced chronic kidney disease increased year by year, but we experienced a little decrease last few years.

OBJECTIVE

To follow up the fate of patients in whose case the need for renal replacement therapy occurred.

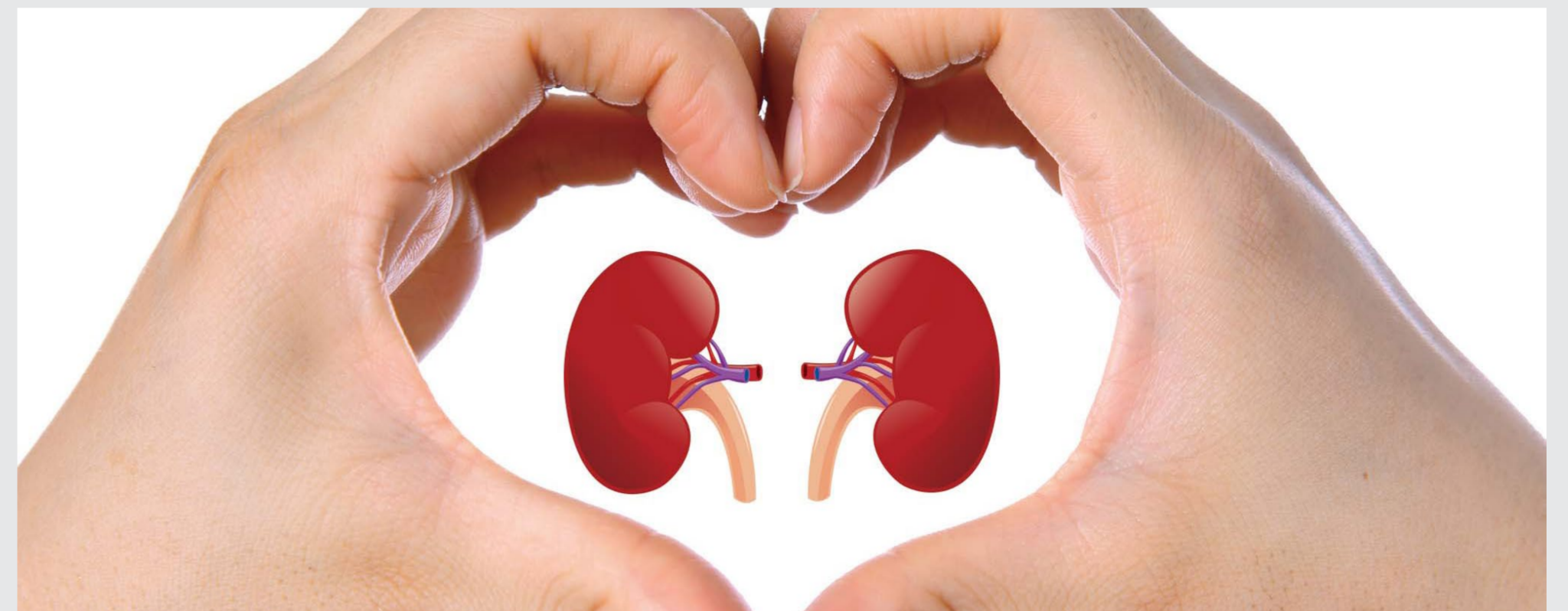
RESULTS

PATIENTS, METHODS

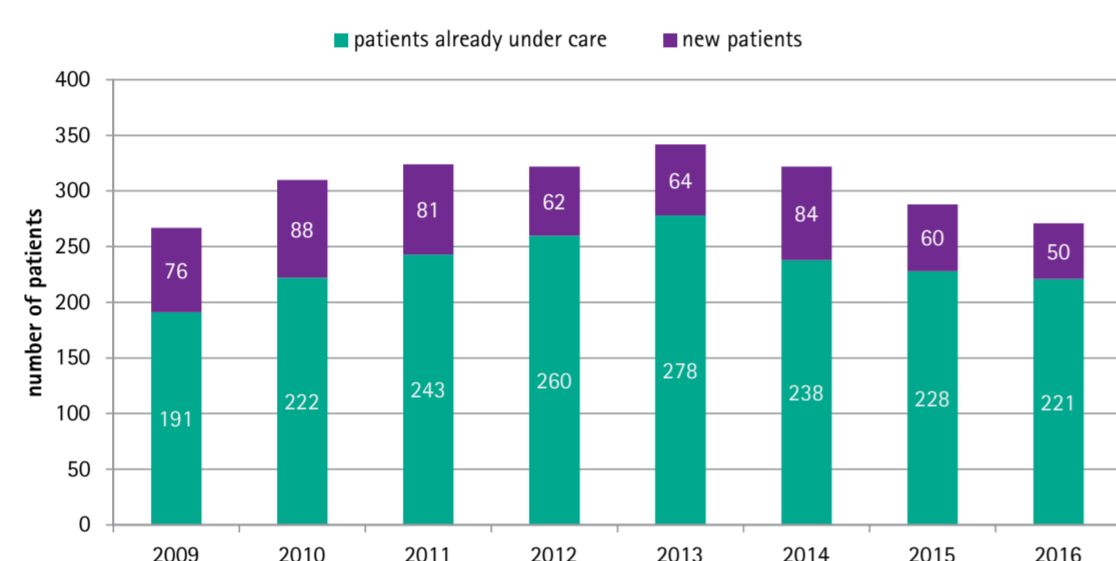
We included 881 patients who repeatedly had an eGFR value of 20 mL/minute/1.73m² or less while being in our care into this study.

The fate of these patients entering the predialysis stage was monitored from 2009 up to the end of 2016.

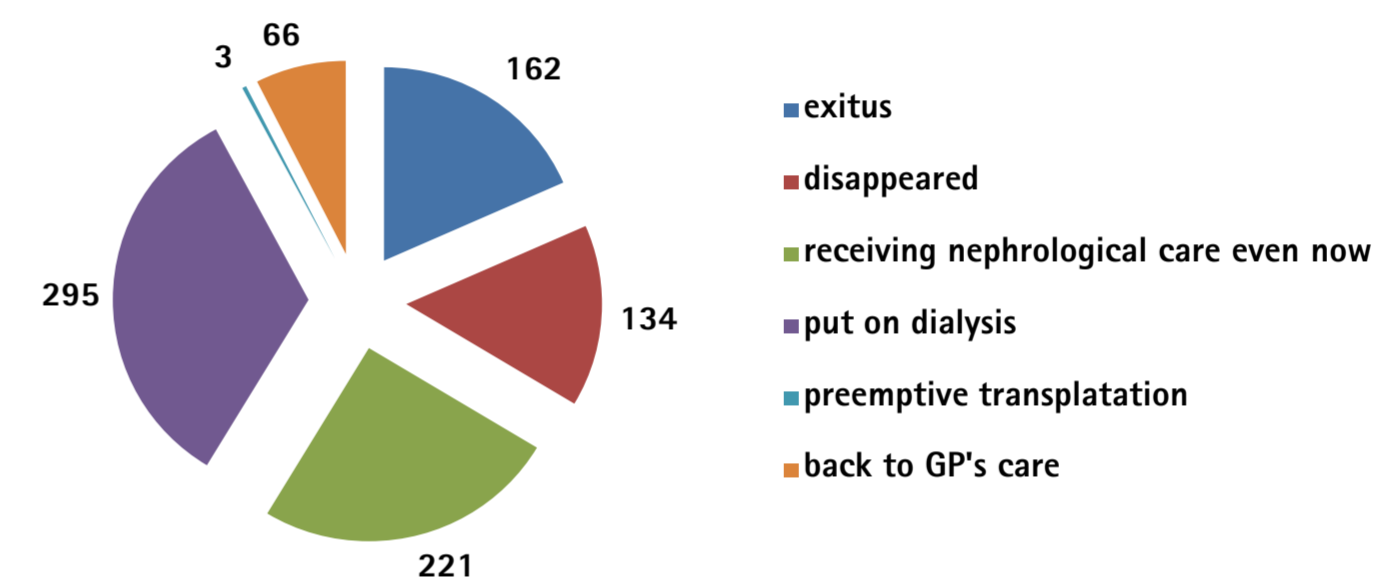
OUR CKD PATIENTS WITH EGFR ≤20ML/MIN/1.73M ² IN NEPHROLOGICAL CARE BETWEEN 2009-2016			
	all patients 881 pts	≤ 65 years 260 pts 29.5%	> 65 years 621 pts 70.5%
average age at the start of care (years)	69.6±13.7	52.7±10.9	76.7±6.8
average age at the time of study or drop-out (years)	72.8±14.4	57.5±11.2	79.2±10.1
average length of care time up to 31 December 2016 or to the drop out date (years)	3.7±3.2	4.8±5.5	3.2±3.0
starting GFR (mL/min/1.73m ²)	19.2±6.1	19.1±7.4	19.2±5.4
closing GFR (mL/min/1.73m ²)	19.4±11.1	18.6±14.5	19.7±9.3



Number of patients receiving care with a GFR ≤ 20 mL/min/1.73 m² 2009-2016 n=881

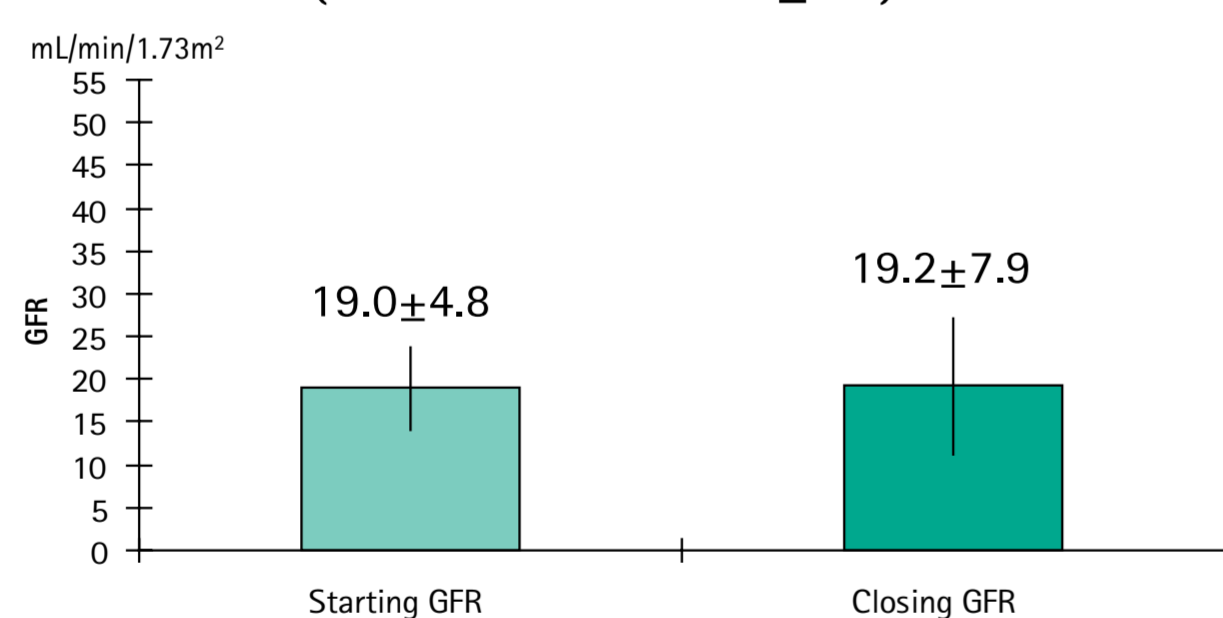


Fate of patients with eGFR ≤20 mL/min/1.73m² n=881



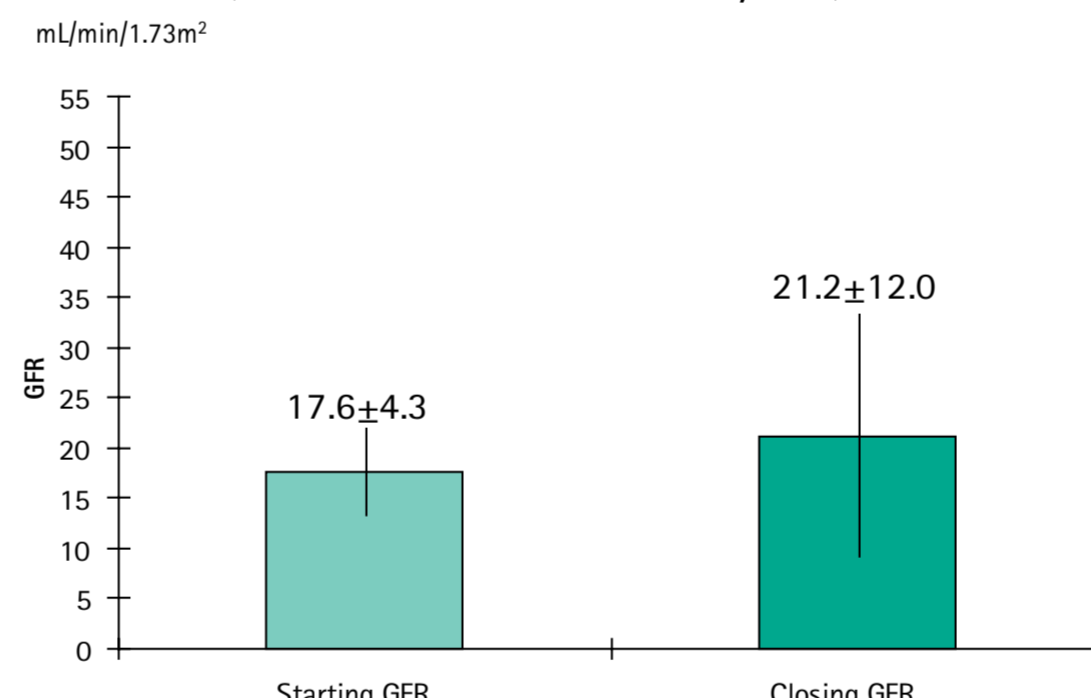
DIED PATIENTS N=162 (18.4%)			
	all died patients 162 pts	≤ 65 years 17 pts 10.5%	> 65 years 145 pts 89.5%
average age at the start of care (years)	74.6±10.2	54.0±8.4	77.1±7.1
average age at drop out (years)	77.8±10.5	55.0±8.6	80.7±6.6
average length of care time (years)	3.3±3.2	1.0±1.3	3.6±3.2
starting GFR (mL/min/1.73m ²)	19.0±4.8	16.1±3.8	19.3±4.8
closing GFR (mL/min/1.73m ²)	19.2±7.9	17.3±7.9	19.4±8.0

Died patients n=162 (18.4%) (duration of care: 3.3±3.2)



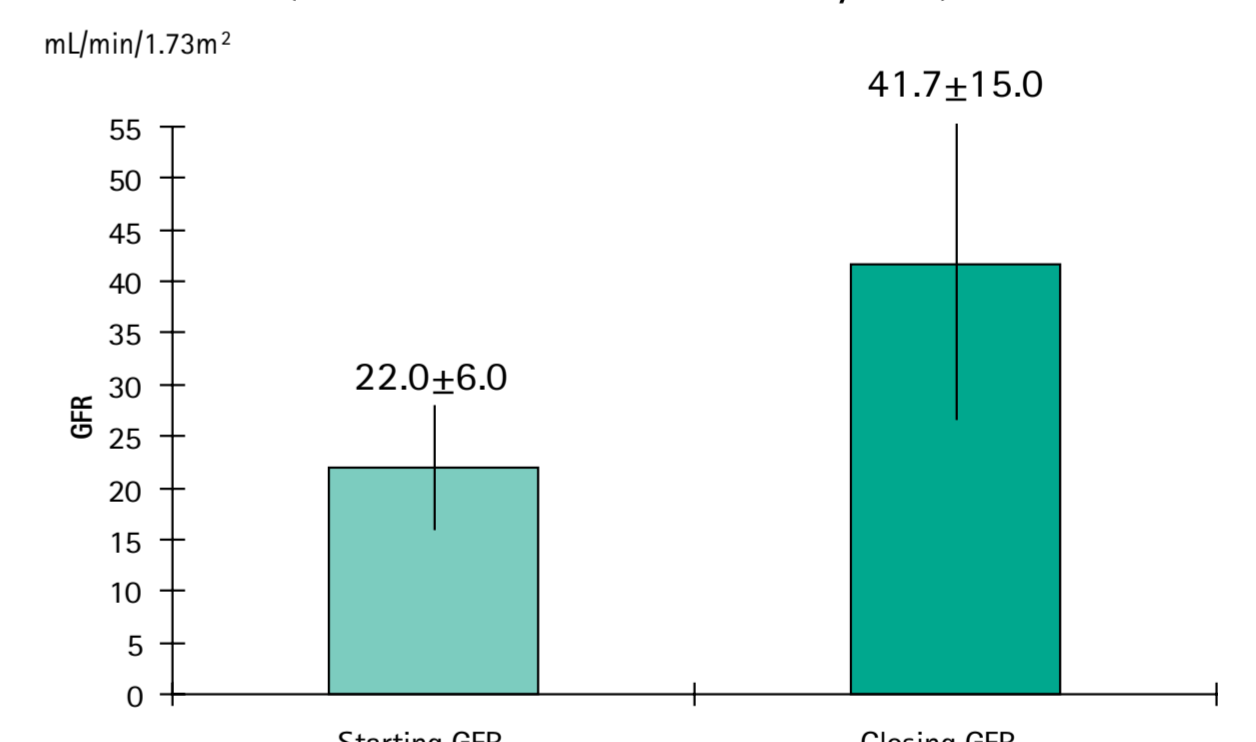
"DISAPPEARED" PATIENTS 134 (15%)			
	all disappeared patients 134 pts	≤ 65 years 31 pts 23.1%	> 65 years 103 pts 76.9%
average age at the start of care (years)	74.2±12.1	53.6±11.3	77.7±7.9
average age at drop out (years)	77.6±11.3	57.2±9.2	81.1±7.1
average length of care time (years)	3.4±4.3	3.6±4.0	3.4±4.3
starting GFR (mL/min/1.73m ²)	17.6±4.3	16.5±3.6	17.8±4.4
closing GFR (mL/min/1.73m ²)	21.2±12.0	27.3±20.3	20.2±9.6

"Disappeared" patients n=134 (15%) (duration of care: 3.4±4.3 years)



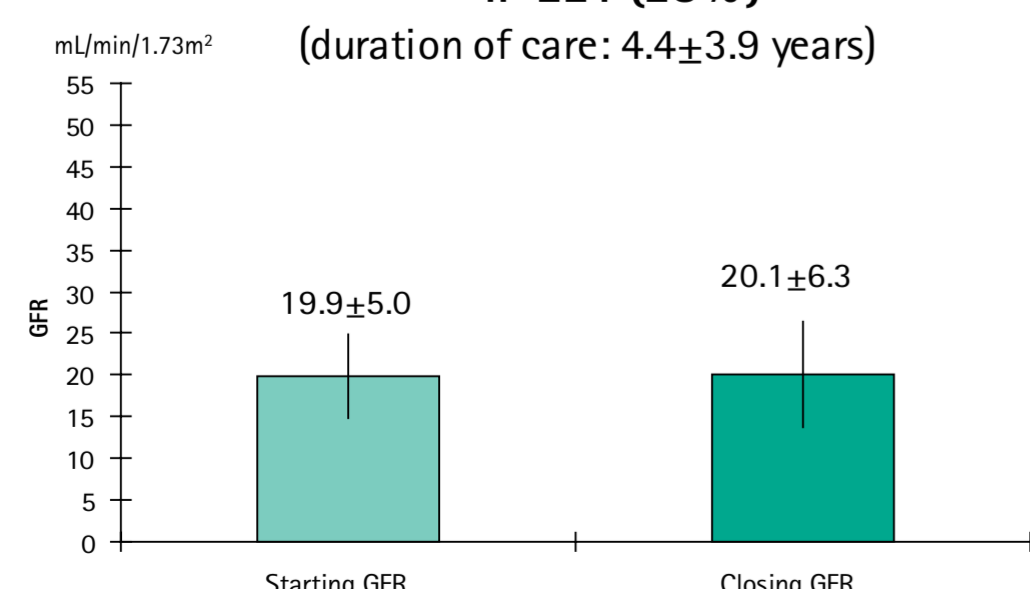
BACK TO THE GP'S CARE N=66 (7.5%)	
average age at the start of care (years)	72.3±10.8
average age at drop out (years)	75.9±10.7
average length of care time (years)	3.6±2.3
starting GFR (mL/min/1.73m ²)	22.0±6.0
closing GFR (mL/min/1.73m ²)	41.7±15.0

Back to the GP's care n=66 (7.5%) (duration of care: 3.6±2.3 years)



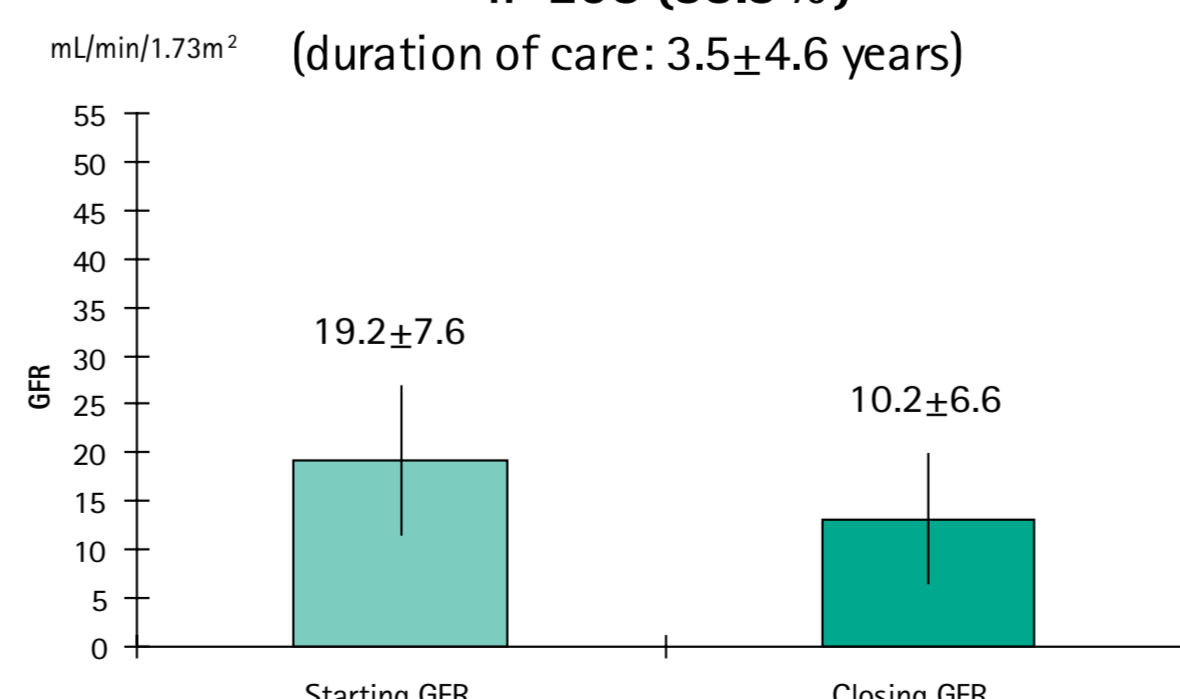
PATIENTS UNDER NEPHROLOGICAL CARE AT THE END OF STUDY N=221 (25%)			
	all pts 221 pts	≤ 65 years 36 pts 16.3%	> 65 years 185 pts 83.7%
average age at the start of care (years)	72.2±12.1	54.9±13.1	75.7±8.4
average age at the end of study (years)	74.9±15.6	50.0±20.7	79.9±7.7
average length of care time (years)	4.4±3.9	5.1±4.6	4.2±3.7
starting GFR (mL/min/1.73m ²)	19.9±5.0	20.3±5.5	19.8±4.9
closing GFR (mL/min/1.73m ²)	20.1±6.3	19.8±8.33	20.2±5.8

Patients under nephrological care at the end of study n=221 (25%) (duration of care: 4.4±3.9 years)

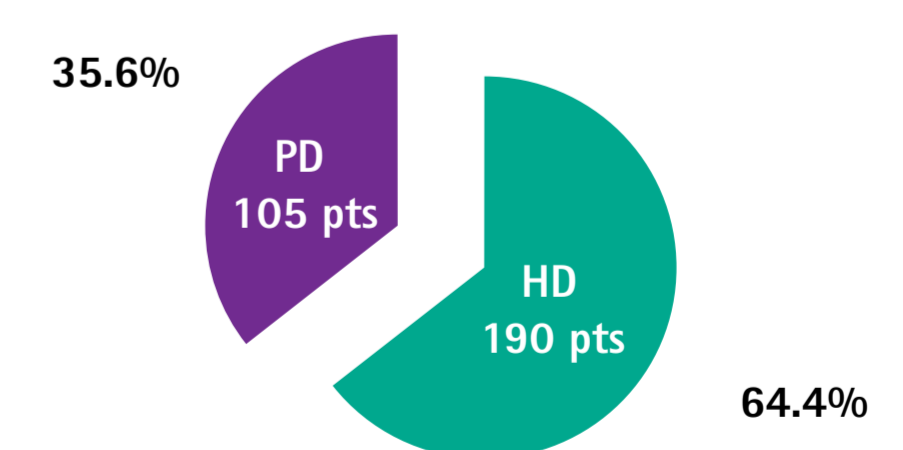


PATIENTS UNDERWENT DIALYSIS THERAPY N=295 PTS (33.3%)			
	all 295 pts	HD 190 pts 64.4%	PD 105 pts 35.6%
average age at the start of care (years)	62.7±14.5	65.7±12.7	57.3±15.8
average age at the start of dialysis (years)	66.2±13.8	68.9±12.2	61.4±15.2
average length of care time (years)	3.5±4.6	3.2±3.8	4.1±5.7
starting GFR (mL/min/1.73m ²)	19.2±7.6	18.8±6.4	20.1±9.3
closing GFR (mL/min/1.73m ²)	10.2±6.6	9.3±4.4	12.9±9.1

Patients underwent dialysis therapy n=295 (33.3%) (duration of care: 3.5±4.6 years)



Distribution of patients transferred from nephrological care to the dialysis programme n=295 (33.3%)



CONCLUSION

- 25% of the patients have been in our care in stable condition for 4.4 years on average.
- The rate of deceased patients was 18.4%. These patients were older and the main cause of death was cardiovascular.
- 15% of cared patients disappeared from the kidney care service.
- 7.5% of the patients were referred back to GP's care because their renal function improved (eGFR >30mL/min/1.73m²).
- 33.3% of patients had initiated renal replacement therapies. 35.6% of these patients chose PD.