



**UZ
LEUVEN**



Nephrocare project

View of renal patients and general practitioners on coordination of care

Annelies Hellemans, Katrien Dierickx, Eveline Hallez, Dirk Kuypers, Kathleen Claes

Background

- Delay of Chronic Kidney Disease (CKD) by adequate treatment of risk factors
- Cooperation between General Practitioners (GP's) and nephrologists
- Support of selfmanagement
- Care Trajectory Belgium CKD

Care Trajectory Belgium

- eGFR

	eGFR (ml/min/1,73m ²)	
Stage 1	>90	
Stage 2	60-89	
Stage 3A	45-59	
Stage 3B	30-44	} Care Trajectory Belgium
Stage 4	15-29	
Stage 5	<15	

- Proteinuria >1g/24h

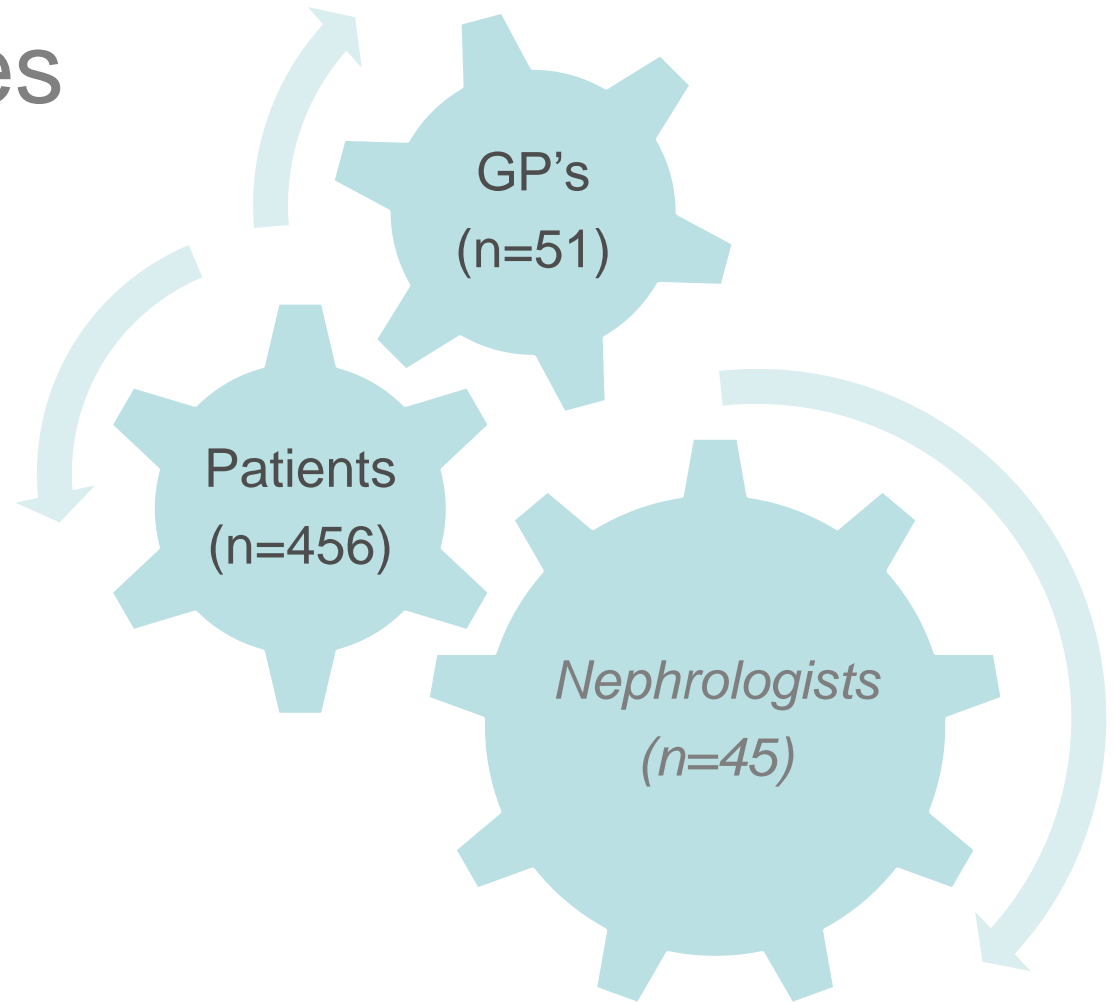
Objectives

Perspective of patients and GP's on the
coordination of care

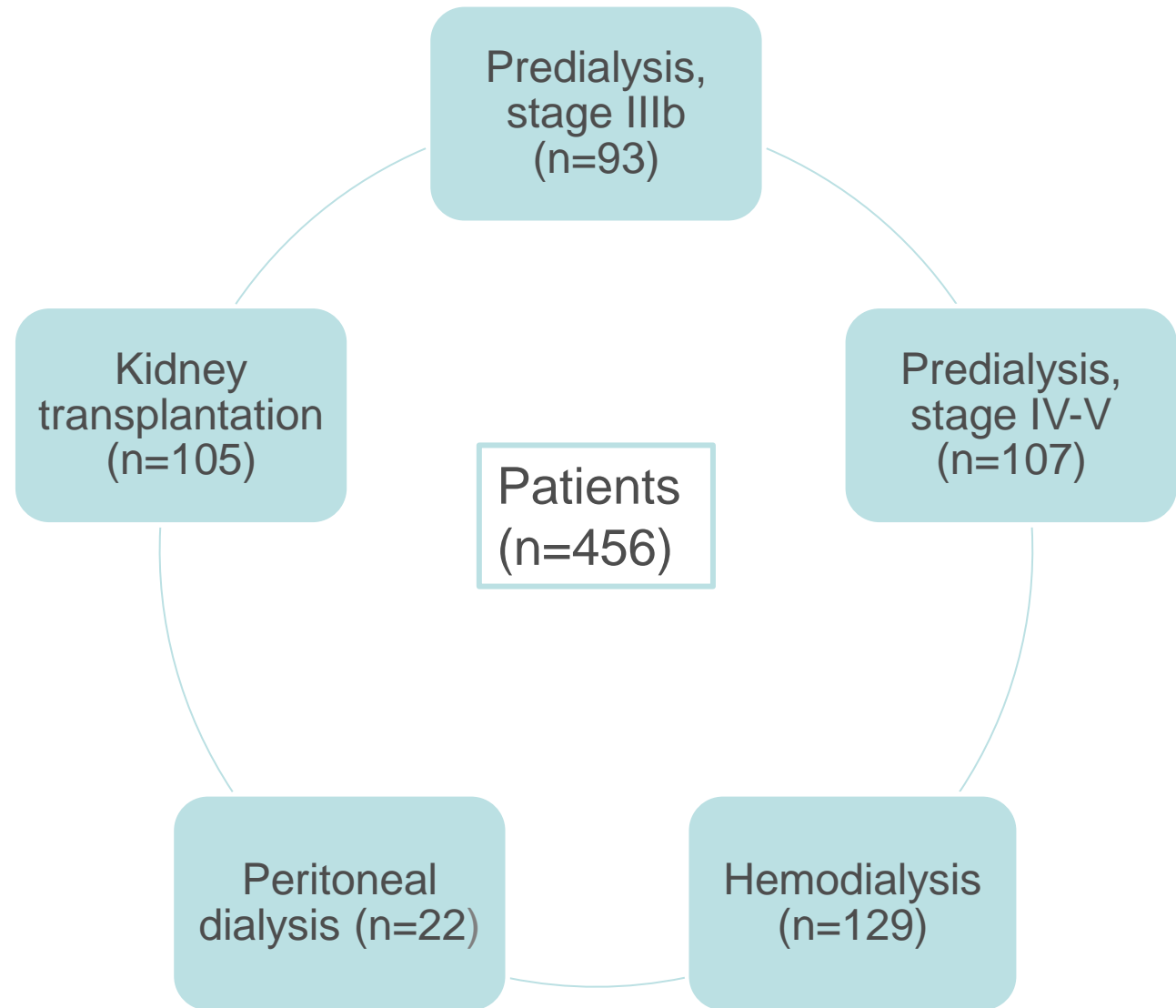


Methods

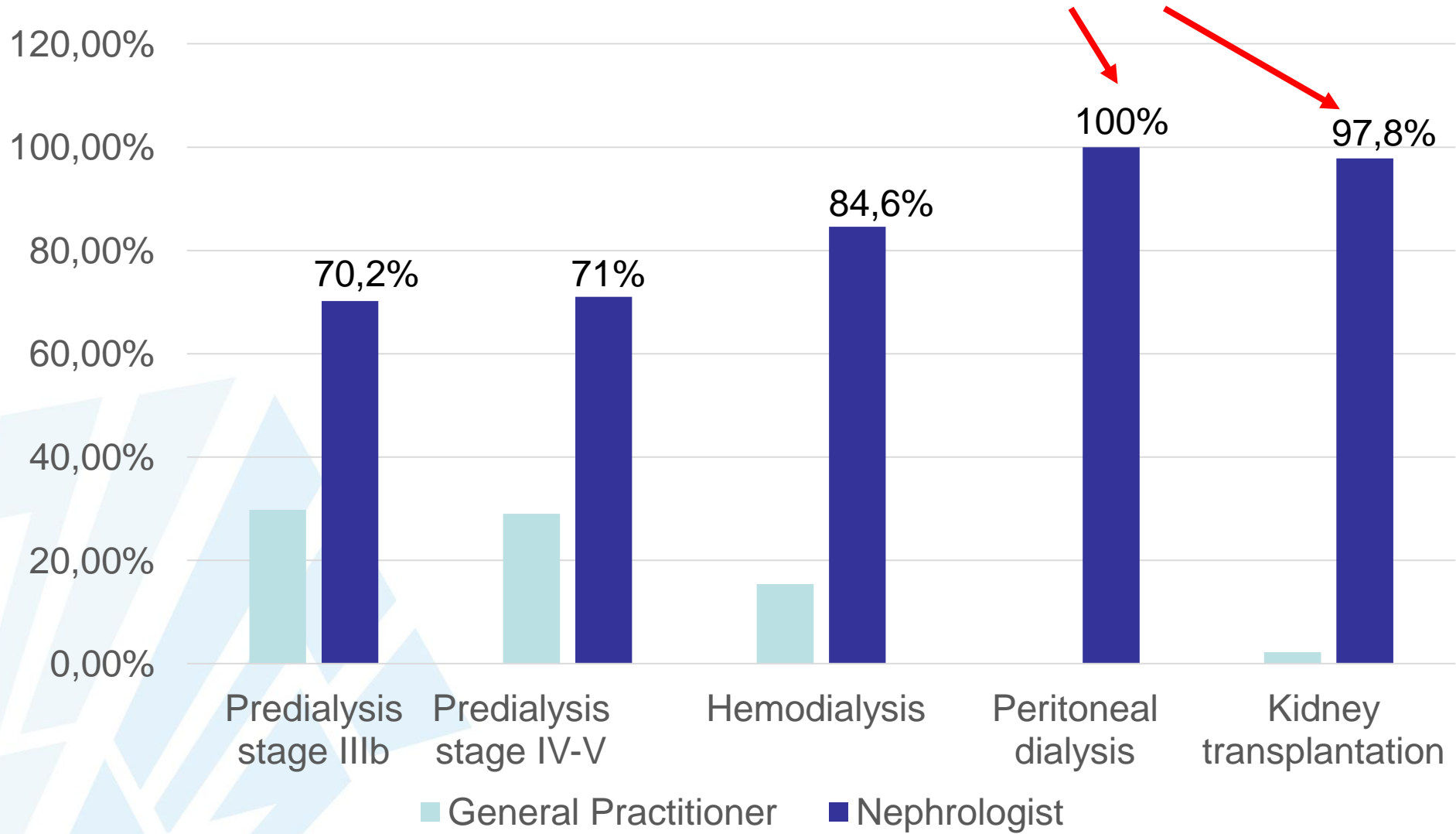
- Questionnaires



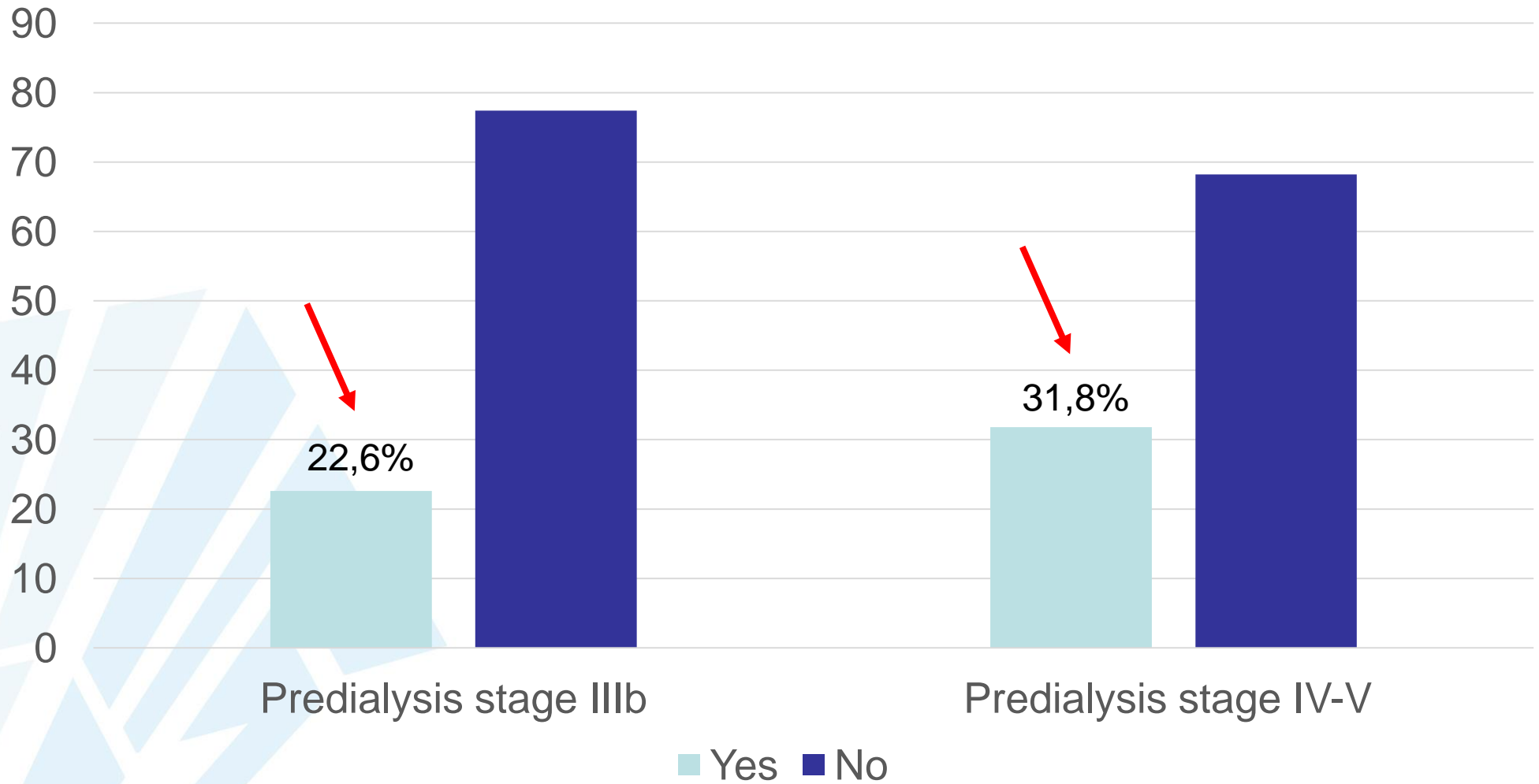
Methods (2)



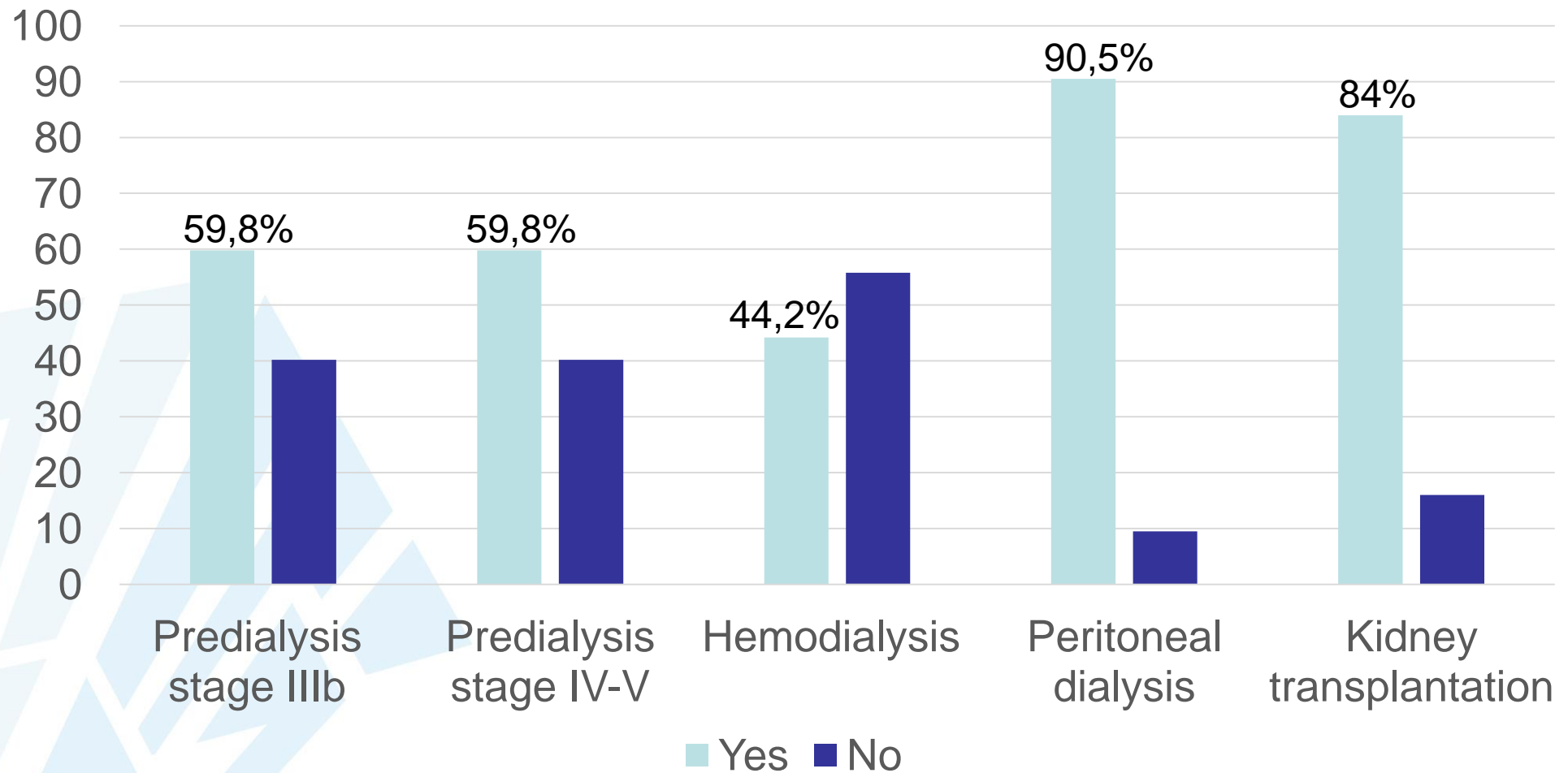
Who do you choose as your coordinator of care?
Nephrologist as coordinator of care



Do you know your eGFR?
Limited knowledge of eGFR



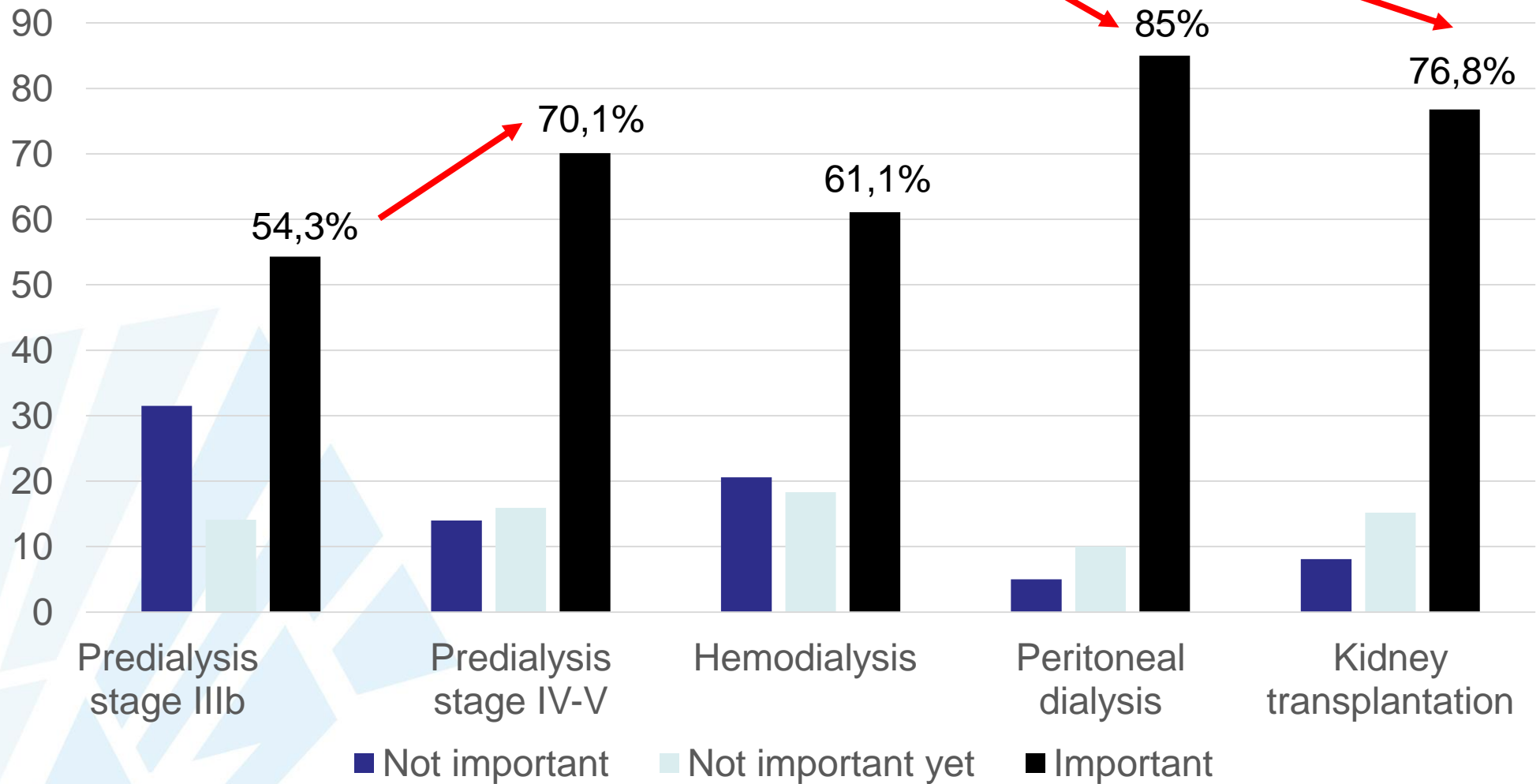
Do you have internet access at home?
Limited internet access for predialysis and hemodialysis patients



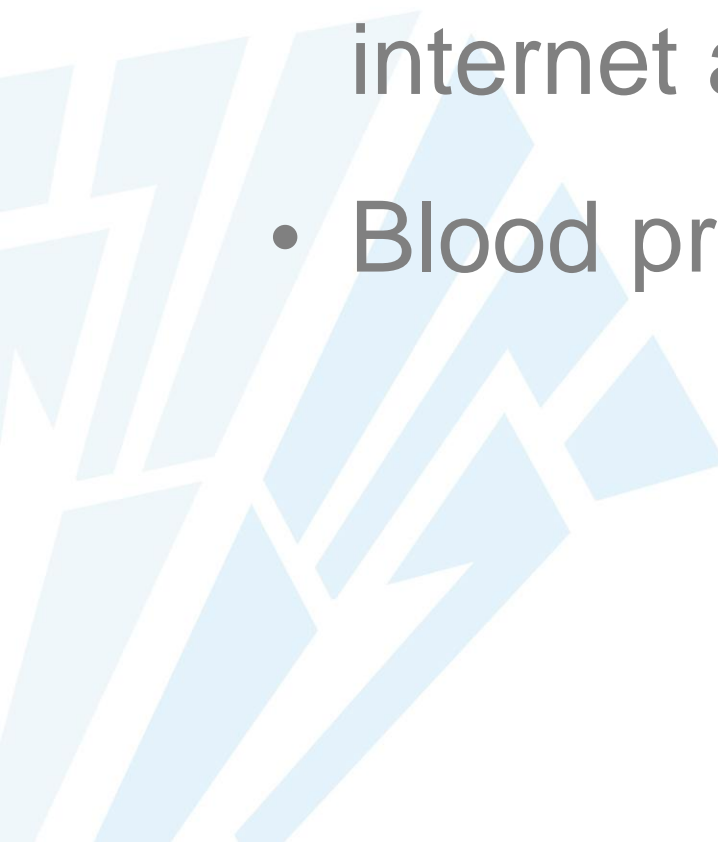
Hellemans, A., Dierickx, K., Hallez, E., Kuypers, D., Van den Bosch, B., & Claes, K. (2016). *Digital literacy in patients with chronic kidney disease*. Posterpresentation, EDTNA/ERCA.

How important is it for you to measure your blood pressure on a regular basis and share these results with your hospital?

Difference in importance of blood pressure monitoring



Results: Patients

- Nephrologist as coordinator of their care
 - Limited knowledge of eGFR and limited internet access for predialysis patients
 - Blood pressure monitoring
- 

Results: GP's

Main coordinator for the treatment of hypertension, pain therapy and preventive care

52,1% supports behavioural changes


GP's


85,4% accepts the role of a renal nurse

81,3% admits to have too limited knowledge about renal pathology and treatment

Results: GP's (2)

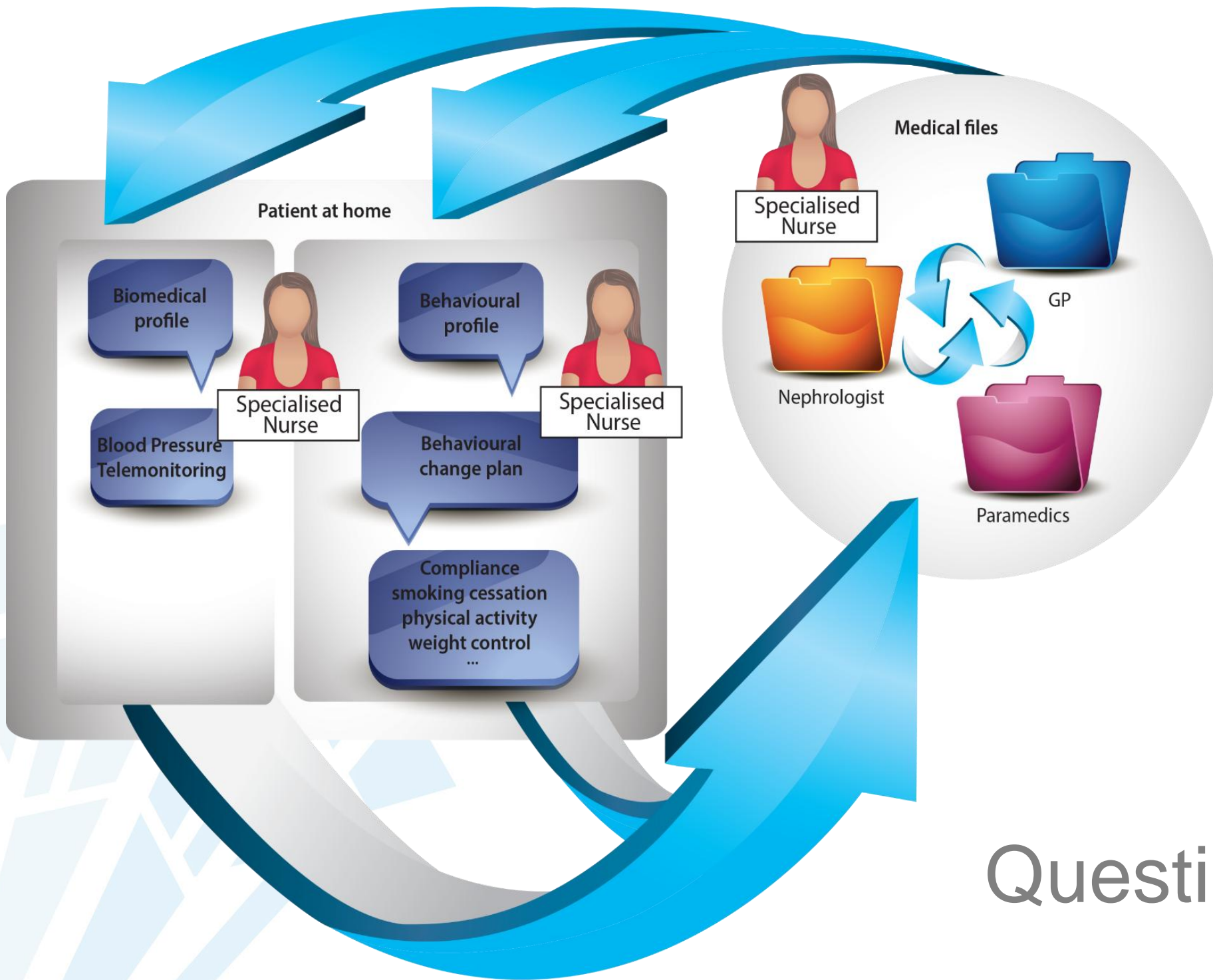
Role of a renal nurse: strengths and limitations

- 
- + Time
 - + Accessibility (patient)
 - + Continuity of care
 - + Behavioural change
 - + Recognize and solve problems

- 
- Communication
 - Accessibility (GP)
 - Exchange of information

Conclusion and recommendations

- Different perspectives between patients and GP's about the coordinator of care
- GP's acknowledge the support of a renal nurse
- Further research for the exact role of a renal nurse is necessary
- 'Know your number'



Questions?